



6, Falcon Close, Innsworth, Gloucester, GL3 1AQ

£295,000

CHOSEN
ESTATE AGENTS

THE PROPERTY

This beautifully modernized three bedroom semi-detached home in Innsworth offers a blend of contemporary style and comfort, making it an ideal choice for first time buyers or families alike.

The property features a lovely, modern kitchen that serves as the heart of the home, perfect for cooking and entertaining. The spacious sitting room provides a welcoming space for relaxation, while the additional conservatory offers a bright and versatile area that can be used as a dining room, playroom, or home office. A convenient WC adds to the functionality of the home.

Outside, the private enclosed rear garden provides a peaceful retreat for outdoor activities and entertaining. Ample off-road parking ensures convenience for homeowners and guests, with plenty of space for multiple vehicles.

This home combines modern amenities with a comfortable living environment. Whether you're a first-time buyer or looking to upgrade to a larger space, this property offers a wonderful opportunity to enjoy a stylish and practical home.

- Three Bedroom Semi-Detached Home
- Private Corner Plot
- Modernised Throughout
- Enclosed Rear Garden
- Cul-De-Sac Location
- Driveway Providing Multiple Off Road Parking Spaces
- EPC Rating: C75
- Council Tax Band: C

Agents note.

Freehold.

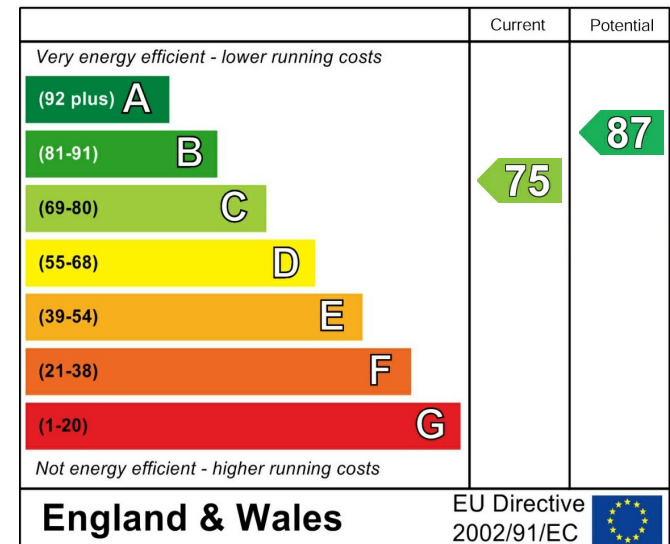
EPC Rating: C75

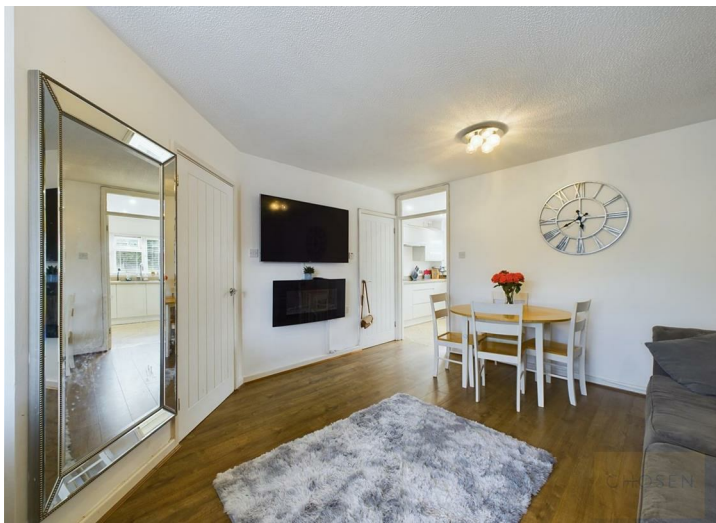
Tewkesbury Borough Council Band: B

Mains Gas, Electric and Water are connected.

Fibre Broadband is available in the area

Energy Efficiency Rating







Approximate total area⁽¹⁾
904.49 ft²



(1) Excluding balconies and terraces

While every attempt has been made to ensure accuracy, all measurements are approximate, not to scale. This floor plan is for illustrative purposes only.

GIRAFFE360